

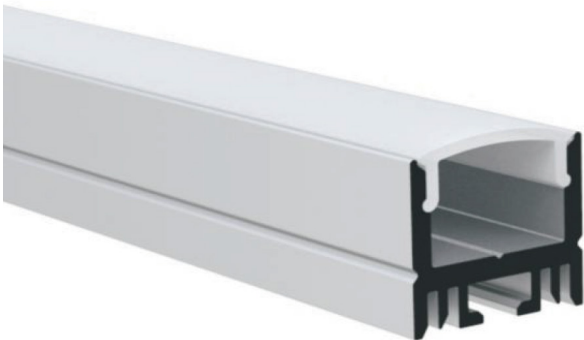
L15

Litenet Kinetix presents the powerful Linear L15 lighting system. This linear lighting system is widely used in shop fit outs, cabinets, clubs, pubs, hotels or anywhere linear pelmet lighting is required to accentuate a product or space.

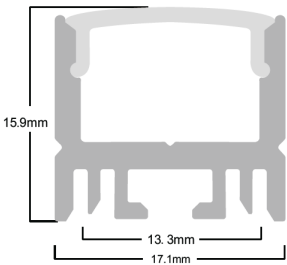
The L15 is a surface mounted system and have seamless joints and is custom made to almost any lengths in 100 mm increments.

Mounting accessories Surface mounted clips

50,000hour L70 5 year warranty



-  SMD LED 3000K / 4000K
-  DC24V
-  10-10V, DALI



CLIPS DIFFUSER



OPAL DIFFUSER

Power	5w/m	10W/m
LED	SMD	SMD
Luminous flux 3K	360lm	727lm
Luminous flux 4K	400lm	800lm
Dimensions	17mm x 16mm	17mm x 16mm
Diffuser	Opal	Opal
Beam angles	90°	90°
CRI	90	90
3000K Part No	L15 5803	L15 10803
4000K Part No	L15 5804	L15 10804

